



spheri
VALVE

The
ultimate
solution

The Spheri Valve[®] reputation for reliability

The power industry's most specified cut-off valve.

In the harsh world of abrasive ash handling, Clyde Bergemann's heavy-duty Spheri Valve[®] has achieved an enviable reputation. Its reliability and consistent performance in applications where a positively sealed cut-off valve is required, has made the Spheri Valve[®] the solution the world's power industry trusts and demands.

Economic

The Spheri Valve[®] was designed specifically for Clyde Bergemann DensPhase pneumatic materials handling systems but its versatility has seen its use spread far beyond this. It has provided **significant cost savings** when retrofitted to other pneumatic ash systems, thus ending the frequent and expensive valve failures to which they are often prone.

Versatile

The Spheri Valve[®] performs equally well when retrofitted to vessel inlets, vents or outlets where it has been used with **differential pressures** of up to 450psi and ash temperatures of up to 900°F. It is also used extensively as a silo discharge control valve and as an isolation valve within ash-conveying pipelines.

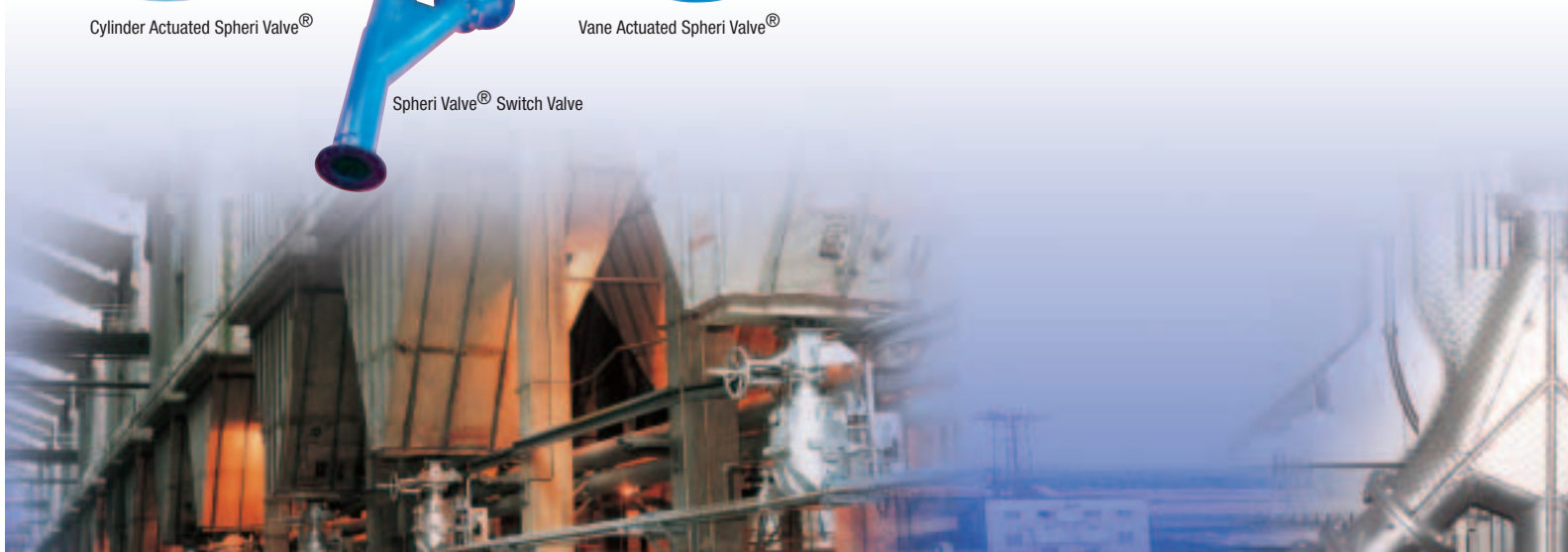
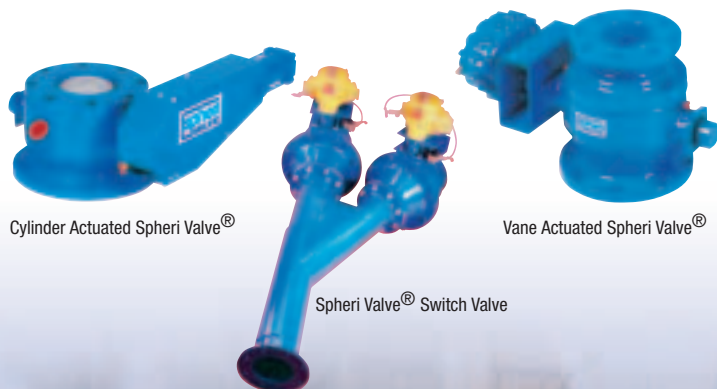
Benefits :

- Maintenance Cost Savings
- generally only a seal change once per year
- Simple, fully proven reliable design
- Easy to install - Easy to maintain
- Long operating life - generally in excess of 10 years
- Cuts through moving or static columns of material up to 0.5" lump size
- Fully guaranteed when installed under approved conditions

When used with the CBM range of pneumatic handling technology, the Spheri Valve[®] commonly provides up to **1,000,000 machine operating cycles between major overhauls** with the only maintenance generally being a **seal change once per year**, giving a reputation which cannot be matched by any other valve in the market place.

Full Bore Material Flow

Totally unrestricted full bore material flow is assured throughout the full range of 2" - 20" diameter Spheri Valves[®] by the unique design of the dome shaped assembly. This eliminates the common problems of bridging and blocking associated with other valve types.



Top performance Low maintenance Long service life

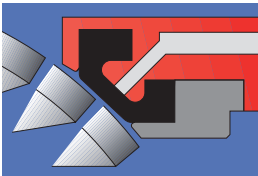
The Spheri Valve® was developed by Clyde during the 1970s and pioneered the use of an inflatable pressure tight seal arrangement that became its hallmark.

This resulted in an unprecedented level of performance, particularly in terms of its exceptionally long service life even when handling the most abrasive materials.

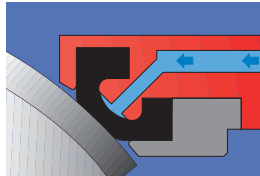
Add further benefits like cavity-free construction, full bore material flow and ease of maintenance and you begin to understand why some 15,000 Spheri Valves® are in current daily operation worldwide.

Within a power plant the Spheri Valve® can be used to handle:

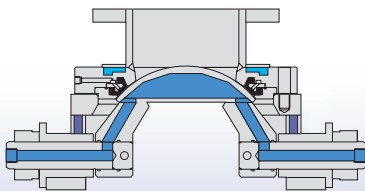
- All types of ash
- Coal and other fuels
- Limestone and other sorbents



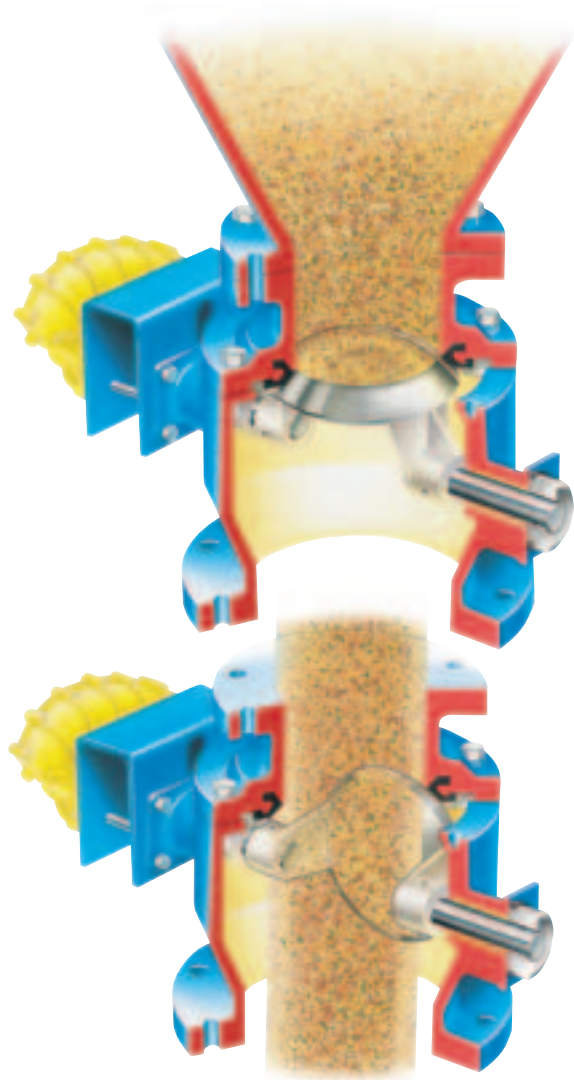
The seal automatically deflates during opening and closing, thereby avoiding contact with the dome assembly and eliminating unnecessary wear.



The seal automatically inflates only when the dome is fully closed.



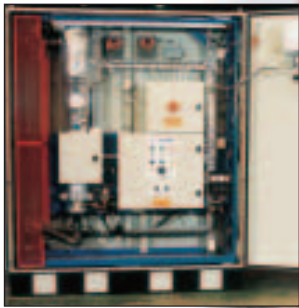
Typical water cooled valve



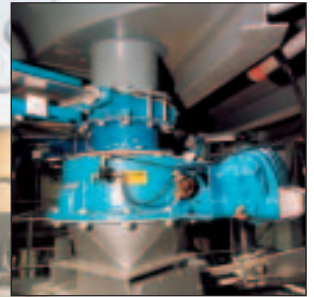
Spheri Valve® sold outside the United states under the trade name 'Dome Valve'.



Serving The Power Industry Worldwide



Carbon in ash monitoring



Spheri Valve®



Ash Handling



- **Total ash handling solutions**
- **Limestone handling solutions**
- **Carbon in ash monitoring**
- **Bulk materials control valves**



a member of the Clyde Bergemann Power Group

Clyde Bergemann is represented in over 40 countries worldwide

Clyde Bergemann Delta Ducon, Inc.
Three Tun Business Center * 33 Sproul Road * Malvern Pa 19355
Toll Free: 1-800-238-2974
www.DELTADUCON.com